



CUSTOM ENGINEERING SINCE 1988

# WHAT MAKES US DIFFERENT

THE LEADING MANUFACTURER OF MINING & PLANT EQUIPMENT IN SOUTH AFRICA.

Pitbull Equipment™ exists within a thriving industry and offers a competitive advantage, sustainable systems and contingency planning, with a strong customer focus and enthusiasm for new and established products and markets. We provide our worldwide partners and clients with reliable solutions.

Pitbull Equipment™ has provided high value service solutions to the mining and plant industry throughout South Africa since 1988.

Our three-decade proven track-record demonstrates our solutions-based approach to challenges relating to access, lifting and transportation.

Centrally based in Vryheid, Northern KwaZulu-Natal – the heart of South Africa's coal mining industry. There's no better place to prove to the world that when it comes to above and below ground precision engineering, we know our business!

## VERSATILE MINING EQUIPMENT.

Pitbull™ products are utilized in multiple sectors including steel production plants, mining, pulp-processing plants and the timber industry.

Pitbull Equipment™ boasts an innovative product suite, leveraging greater efficiency through increased adaptability.

The range is designed with self-protecting features to achieve superior mechanical reliability under severe operating conditions whilst ensuring the safety of both operators and equipment.

We serve our clients with modern cranes equipped with the latest in safety and mobile crane technology.

Controlled handling, and easy manoeuvrability.

## PARTNERING WITH WORLD LEADING BRANDS

TRANSNER



SASOL



BIDVest



# SPECIALIST MANUFACTURING & REPAIRS

Dedication to our customers through commitment to service, quality repairs and detailed customer feedback has dynamically grown and propelled Pitbull Equipment™ to a market leader in the Hydraulic Service Industry.

**DIVISIONS:** DESIGN, SERVICE, MANUFACTURE AND SALES

Our reputation is built upon professional expertise in design, fabrication, machining and assembly of light, medium and heavy engineering products.

## QUALITY GUARANTEE

**DESIGN | PERFORMANCE | LONGEVITY**

At Pitbull™, our focus is on ensuring the highest quality standards of safety, performance, versatility and ease of use. Our products are custom designed to meet the specific requirements of our clients.

As a highly skilled engineering service provider we guarantee our world class products and service to our valued clients. We have the necessary facilities to test all items manufactured, repaired and/or supplied.

**MADE IN SOUTH-AFRICA. SUPPLIED WORLDWIDE.**

## AFFILIATIONS AND SAFETY FEATURES

ECSA Engineering Council of SA 2010120057

PR Engineering Number 201070143

LEEASA Lifting Equipment Engineering Association of SA 8100841

N.R.C.S. National Regulator for Compulsory Specifications 15472 RR

M.I.B. Registration Importer & Builder K5916414/5

All units manufactured to SANS 10162: 2005 Standards

LMI: Mr. Robert Wayne Milne: - 201020057

Material Certification on all steels.

Approved welding procedure WEP01 in accordance with AWS D1.1 for dynamically loaded structures.

World Manufacturer Identifier Code (W.M.I.): AE9



## CONTENTS

[PE-100 SERIES] PITBULL™ UTILITY CRANE	PAGE 1
[PE-300 SERIES] PITBULL™ UTILITY CRANE	PAGE 5
[PERWJ-6000 SERIES] PITBULL™ JIB CRANE	PAGE 9
[PECM] PITBULL™ CONTINUOUS MINING STAKER UNIT	PAGE 13
[PELW] PITBULL™ STAKER UNIT: LONG WALL	PAGE 15
[PELB-7000] PITBULL™ LOW-BED TRAILERS	PAGE 17
[PERB] PITBULL™ ROOFBOLT TRANSPORT TRAILER	PAGE 19
[PEDH] ROOFBOLTER DRILL HEADS	PAGE 21
[PEWT-4000] PITBULL™ WATER FIRE TANKERS	PAGE 23
[PEBT-8000] PITBULL™ RECOVERY TRAILER	PAGE 26
[PEED-LHD] BUCKET ASSEMBLIES	PAGE 29
[PESC] PITBULL™ SCISSOR TRAILER	PAGE 31
[PE-40885] SAFETY LOCKOUT VALVES	PAGE 33
[PEED-GR] GRADER ATTACHMENT	PAGE 37
[PEED-CH] PITBULL™ CHOCK	PAGE 39
[PE300-CR] PITBULL™ PE 300 SERIES CABLE-ROLLER	PAGE 41

## ACCESSORIES

PAGE 43

[PEED-HF] PITBULL™ H-FRAMES
[PEED-QDS] QUICK-DELIVERY SYSTEM
[PEED-QRA] QUICK-RELEASE ATTACHMENT
[PEED-TB] TOW BARS
[PEED-TH] TOW HITCH



## [PE-100 SERIES] PITBULL™ UTILITY CRANE

### DESIGNED AND BUILT TO LAST

A compact lightweight versatile crane with robust design, mounted to above and below ground light delivery vehicles and equipment. This unit is designed with a Load-and-Assist protocol. The PE100 Series Utility Crane performs lifts in tight confines, employed in sectors where manoeuvrability and reach are important considerations.

New regulations disallow man handling of loads with excessive weights.

**BUILT TOUGH. ENGINEERED TO LAST.**

### TECHNICAL DATA : SPECIFICATIONS SHEET

Unit weight:	195 Kg
Load Lifting capacity:	(Refer to load diagram)
Lifting moment:	1 Ton-meter
Operating pressure:	115 Bar
Minimum reach:	750mm
Hydraulic telescopic extension:	1 150 mm
Height in folded position:	885 mm
Hydraulic slew angle:	360 Degrees.
Recommended oil flow:	10 Litres p.m.
Power pack driven.	✓
Overload protection.	✓
Load lock.	✓

#### SAFETY FEATURES:

Hose failure valves on cylinders.

Main relief valve.

Port relief valves per function.

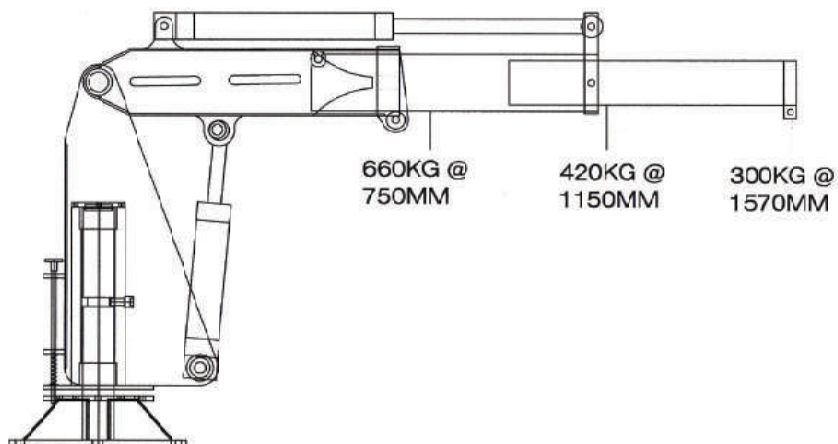
### QUALITY | PRECISION | PERFORMANCE



12 Month Warranty on all structural and hydraulic components. \*



## LOAD DISPLACEMENT



**FITTED TO BOTH BELOW AND ABOVE GROUND GENERAL PURPOSE VEHICLES.**



DEDICATION TO QUALITY, SAFETY, INCREASED PRODUCTIVITY AND INNOVATION IS OUR COMMITMENT, AND YOUR GUARANTEE.







## **[PE-300 SERIES] PITBULL™ UTILITY CRANE**

### **FITTED TO LOW PROFILE MINING TRACTORS AND TRAILERS.**

This unique robust crane was designed to facilitate a mega-lift in constrained areas.

A true multipurpose unit with unlimited application potential, most commonly fitted to general purpose utility vehicles, underground trailers, load haul dumpers and at the rear of mining tractors.

The PE300 Series Utility Crane is unsurpassed in its weight-to-lift ratio.

At a weight of 645 kg and a lifting capacity of 1 750 kg.

A uniquely powerful design and a proven winner in the mining industry.

**BUILT TOUGH. ENGINEERED TO LAST.**

### TECHNICAL DATA : SPECIFICATIONS SHEET

Unit weight:	645 Kg
Load Lifting capacity:	(Refer to load diagram)
Lifting moment:	3.5 Ton/Meter
Operating pressure:	150 Bar
Maximum reach:	4 610 mm
Hydraulic Telescopic Extension:	2 000 mm – 3 350 mm
Height in folded position:	940 mm
Recommended oil flow:	10-15 Litres p.m.
Overload protection.	✓
Load lock.	✓
Tractor and trailer mounts.	✓

### SAFETY FEATURES:

Hose failure valves on cylinders.

Main relief valve.

Port relief valves per function.

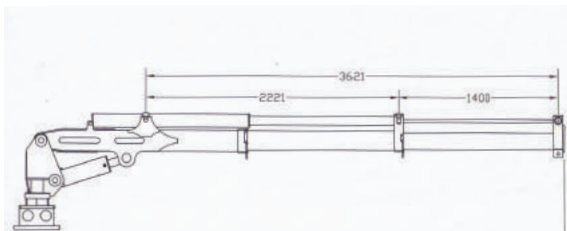
### QUALITY | PRECISION | PERFORMANCE



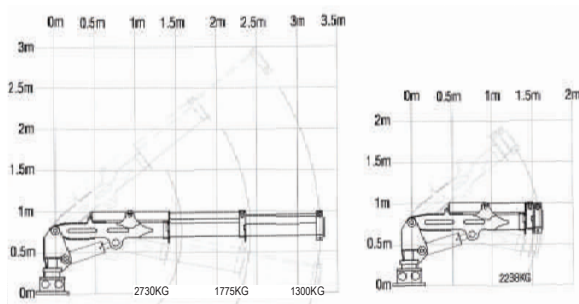
12 Month Warranty on all structural and hydraulic components.\*

### LOAD DIAGRAMS

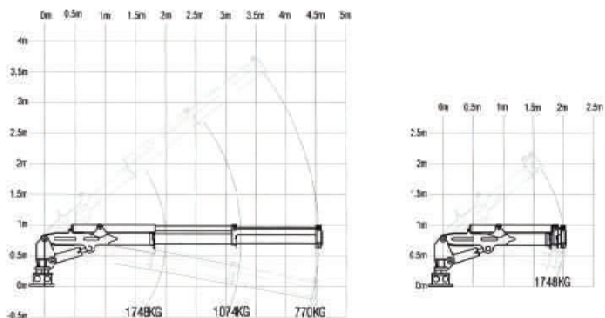
PITBULL 3.5T/M CRANE (BOOM EXTENSION DATA)  
DOUBLE HYDR. EXTENSION OPEN



PITBULL 3.5T/M CRANE (TRACTOR - MOUNTED)  
LOAD DISPLACEMENT



PITBULL 3.5T/M CRANE (TRAILER - MOUNTED)  
LOAD DISPLACEMENT



**SAFE, LIGHTWEIGHT AND MANEUVERABLE**



**PITBULL 300 SERIES MOUNTED TO MANITOU**



**STRUCTURALLY ROBUST, THE PITBULL™ 300 SERIES UTILITY CRANE IS THE MOST COMPACT & LIGHTWEIGHT CRANE AVAILABLE ON THE MARKET.**



## **[PERWJ-6000 SERIES] PITBULL™ JIB CRANE**

### **RELIABLE SOLUTIONS TO WEIGHTY REQUIREMENTS**

#### **A UNIVERSAL HEAVY-LIFT MOBILE CRANE ATTACHMENT.**

The Pitbull™ RWJ 6000 is a robust, safe, custom built jib crane with an extendable boom capable of lifting 6 000 kg.

Turnkey design and engineering allows this unit to be up-lifted by underground LHD's, manoeuvred into position to execute well controlled safe load and transfer operation.

The advantage of this unique product is that it is a detachable unit, without compromise to SAFETY.

This accessory frees up the underground LHD to perform other operations as well.

Safe heavy lifting - on demand - as required.

**BUILT TOUGH. ENGINEERED TO LAST.**

### TECHNICAL DATA : SPECIFICATIONS SHEET

Unit weight:	1 425 Kg
Load Lifting capacity:	6 000 Kg
Operating pressure:	60 Bar
Required flow:	15 Litres p.m.
Composition:	All steels ISO certified.
Hydraulic extension.	✓
Hydraulic reset function.	✓
Overload protection.	✓
Quick Release Attachment.	✓

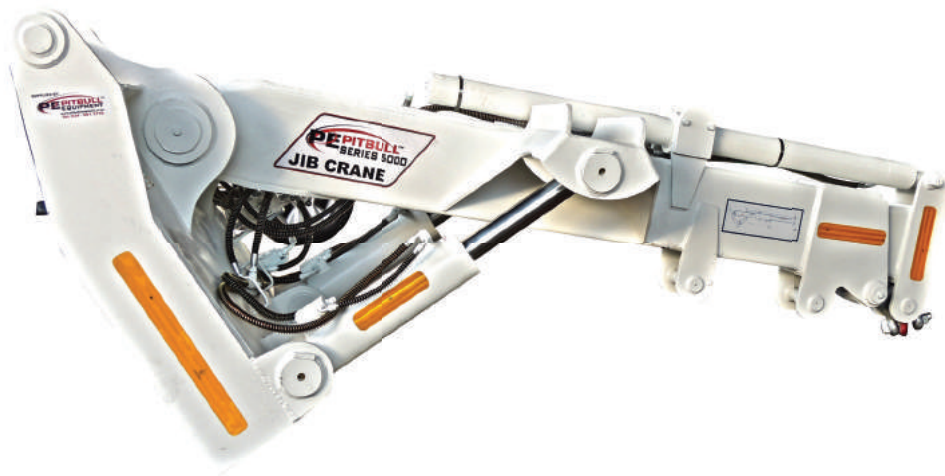
### SAFETY FEATURES:

Hose failure valves on cylinders.

Main relief valve.

Port relief valves per function.

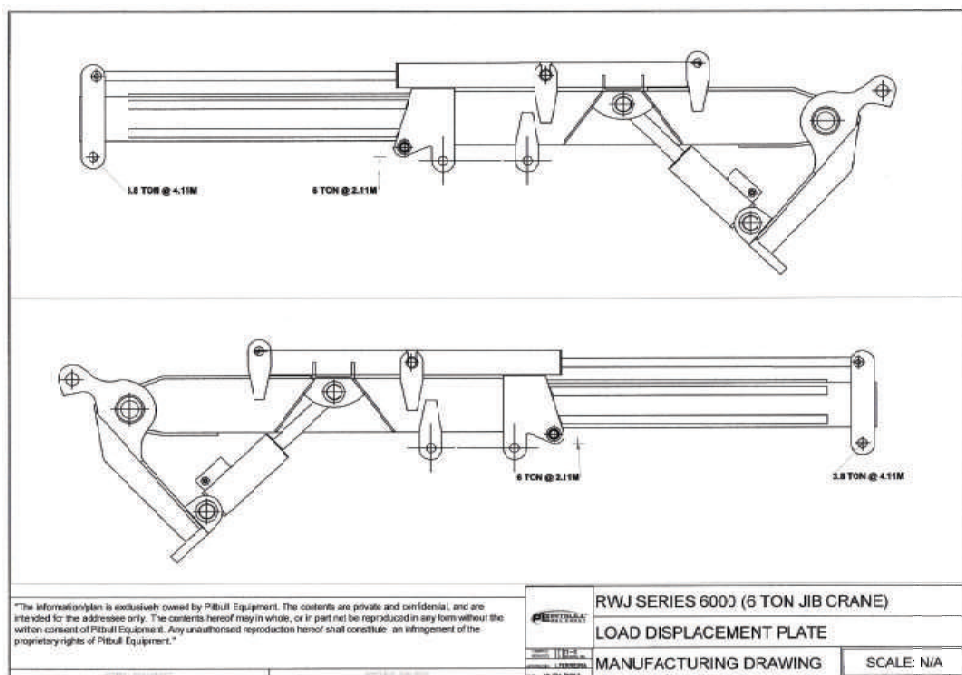
### QUALITY | PRECISION | PERFORMANCE



12 Month Warranty on all structural and hydraulic components.\*



### TECHNICAL DATA - LOAD DIAGRAM



**ADD THE RWJ SERIES 6 TON JIB & ONE HAS A DETACHABLE, MOVEABLE ARTICULATED LIFTING DEVICE SUITED FOR ALL YOUR NEEDS.**



**EASY HOOK UP TO SANDVIK ED7 & ED10.**



This unit has been designed and manufactured for ergonomically safe material handling. Manufactured to a safety ratio of 2.4:1 which exceeds the internationally acceptable standard of 1.4:1.





## [PECM] PITBULL™ CONTINUOUS MINING STAKER UNIT

PECM Stakers are utilized underground as a continuous advance mechanism.

It performs a hydraulic strut and pull function.

Mounted to a skid which allows for hydraulic inching.

Hydraulically driven and operated from within a certified cab.

This PECM is the driver unit of a mining pantechnicon

The PECM is also utilized as a recovery tool to extract machines and equipment that have been caught in a roof collapse or have become bogged down and in-operational.

**BUILT TOUGH. ENGINEERED TO LAST.**

## TECHNICAL DATA : SPECIFICATIONS SHEET

Flameproof Electric motor:	30 KW 1000 Volts
Max. Operating Pressure:	210 Bar.
Lift cylinder	Fitted with load-lock assembly.
Certified canopy	(CSIR)
Skid mounted	✓
Flameproof Panel	✓
Complete with stop-start switch gear.	✓
Close-couple closed pump motor assembly	✓

### SAFETY FEATURES:

Hose failure valves on cylinders.

Main relief valve.

Port relief valves per function.



## DESIGNED FOR 2 X 100 - 150 TON PULL CYLINDER APPLICATION



12 Month Warranty on all structural and hydraulic components.\*



## [PELW] PITBULL™ STAKER UNIT: LONG-WALL

PELW Stakers are utilized underground as a continuous advance mechanism.

It performs a hydraulic strut and pull function.

It is mounted to a skid which allows for hydraulic inching.

Also referred to as the primary mover to haul a pantechnicon as it pulls all the necessary components namely: transformers and equipment to allow for a continuous advance in production.

Driven by a separate high-pressure power pack.

**BUILT TOUGH. ENGINEERED TO LAST.**

## TECHNICAL DATA : SPECIFICATIONS SHEET

Max operating pressure:	450 Bar
Custom extension-assist cylinders	x 2
Certified canopy	(CSIR)
Hydraulic safety:	All cylinders fitted standard with overload protection.
Proportional hydraulic system.	✓
High pressure main-lift cylinder	✓
Featured 400mm additional reach.	✓
Power pack driven.	✓

### SAFETY FEATURES:

Hose failure valves on cylinders.

Main relief valve.

Port relief valves per function.



## DESIGNED FOR 2 X 100 - 150 TON PULL CYLINDER APPLICATION



12 Month Warranty on all structural and hydraulic components.\*





## [PELB-7000] PITBULL™ LOW-BED TRAILERS

**GROUND HAULAGE IS ALWAYS A NECESSITY.**

Pitbull™ Low-bed trailers are fitted with a reinforced deck, solid tyres, and low-profile design. Heavy-duty design, a universal hitch, and 7 000 Kg load-capacity, this product maintains its success through a proven tested track record.

Pitbull™ Low-bed trailers have been hauling goods and equipment in the mining industry above surface and below, for three decades.

**BUILT TOUGH. ENGINEERED TO LAST.**

## TECHNICAL DATA : SPECIFICATIONS SHEET

Solid tyres.
Stub axled
Equipped with heavy duty landing leg.
Hydraulic fail-safe brakes.
Load carrying capacity: 7 Ton
Extras: Toolbox mounting, drop-sides and more.
Robust heavy-duty design and construct
Solid quick-change wheels
Certified hitch point
Low profile stability
Reinforced steel loading deck
Custom built to client requisite

**OPTIONAL MANUAL / HYDRAULIC OUTRIGGERS MANUFACTURED TO SPECIFICATIONS**

**QUALITY | PRECISION | PERFORMANCE**



12 Month Warranty on all structural and hydraulic components. \*



## [PERB] PITBULL™ ROOFBOLT TRANSPORT TRAILER

Automated process, roof-bolts loaded on surface. Mechanization to avoid personal injury and increase efficiency.  
Simultaneous exchange of un-stocked and re-stocked roofbolt bins.  
Easy transition, reload, replenish.

**BUILT TOUGH. ENGINEERED TO LAST.**

## TECHNICAL DATA : SPECIFICATIONS SHEET

Tyre size:	700 -15 Extra solid tyre (standard)
Roofbolter bin capacity:	750 Kg per bin
Front turntable axle:	6-Ton
Fixed rear axle:	6-Ton
Hydraulic winch(s):	10 000 – Pound (X4)
Pod roof-bolter bins.	X 4
Fitted with solid heavy duty quick-change wheels.	✓
Hydraulically activated self-levelling platform.	✓
Side elevating platform.	✓
Complete with failsafe braking system.	✓

**FRONT AXLE AND HITCH POINT: PROPRIETARY PIVOT AXIS.**



12 Month Warranty on all structural and hydraulic components.\*



## [PEDH] ROOFBOLTER DRILL HEADS

This drill head has been designed to fit onto Fletcher machines.  
It is a universal type drill-head and can be fitted to hydraulic and /or pneumatic operations.

- Universal application for ease of business.
- Improved engineering technology.
- Availability of spares considering local content.
- Uninterrupted supply chain.
- Economies of scale.

**BUILT TOUGH. ENGINEERED TO LAST.**

## TECHNICAL DATA : SPECIFICATIONS SHEET

Hydraulic motor-driven.
Hydraulically driven geared-unit.
Angle-box. (Increased torque)
Universal application and fitment.
Hardened chuck and insert.
Latest technology sealing application.
Rated 210 Bar.

## MODIFICATIONS AND UPGRADE TO A UNIVERSAL APPLICATION: SANCTIONED IMPROVEMENTS

- 1 Modification of sealing arrangement to adapt to dual application.
- 2 Shaft has been modified as per representation to suit sealing arrangement.
- 3 Conversion from roller-thrust to ball-thrust.
- 4 Increases in number of key ways on the hardened chuck from 2 to 4.

## QUALITY | PRECISION | PERFORMANCE



12 Month Warranty on all structural and hydraulic components.\*





## [PEWT-4000] PITBULL™ WATER FIRE TANKERS

### FIRE CONTROL AND PROTECTION UNITS BUILT TO YOUR REQUIREMENTS.

Our agricultural low speed trailer is fitted with an 8-ton axle, reinforced chassis and tank combination, and a universal tractor tow hitch.

The 4000-litre tank is fabricated with Corten-steel and internally coated for rust prevention. Fitted with modern firefighting equipment, and latest design hydraulic technology, your fire risk is underwritten by a proven product.

**BUILT TOUGH. ENGINEERED TO LAST.**

## TECHNICAL DATA : SPECIFICATIONS SHEET

Tyre size	1100.R20
Litres per minute:	400 – 450 L/p.m.
Water pump:	1" Twin wide
Water pump:	Hydraulically driven.
Heavy duty hose reels:	Galvanized (x 2)
Water cannon fitted:	360 Degrees.
Corten steel tank:	4 000L
Non-Toxic lining:	2 Coats
Axle:	8-Ton
Brakes:	Hydraulic
Hitch:	Certified BUGLE agricultural



Custom tank to chassis design
Fitted with gold-line hose (25mm x 60 meter) and couplers.
All-round sprayers installed in hand railing with 360-degree cooling jets
Custom built storage and tool boxes
Plated deck - non-slip
Primer tank
Tractor drawn
Firefighting equipment storage and toolboxes (lockable).
Main tank level gauge.
Self-filling system.
Rear water expulsion for dust control.

12 Month Warranty on all structural and hydraulic components.\*

QUALITY | PRECISION | PERFORMANCE





## [PEBT-8000] PITBULL™ RECOVERY TRAILER

The Pitbull™ PEBT - 8000 Trailer is manufactured for the short haul transport of yellow plant and equipment  
e.g. Bell loggers.

The plant can self-drive onto the trailer through the break neck function.

This trailer is also fitted with a hydraulic winch for infield recovery.

This is a tractor drawn design.

Unit is designed and supplied as there is a recovery and transport need and provides an integral solution to the  
agricultural sector

**BUILT TOUGH. ENGINEERED TO LAST.**

## TECHNICAL DATA : SPECIFICATIONS SHEET

Wheels	Double
Tyre size:	8.25 R16
Axle	8 - Ton
Suspension:	Rigid Solid
Hydraulic recovery winch:	10-Ton (RUNVA)
Break neck	✓
Hydraulically braked axle	✓
Self-loader.	✓
Agricultural and customized hitch system available.	✓
Transport and recovery utility.	✓

**LOADING: SELF-DRIVEN AND OR WINCH ASSISTED. (NON-RUNNER)**



12 Month Warranty on all structural and hydraulic components.\*

eNATIS APPROVED (NRCS)



QUALITY | PRECISION | PERFORMANCE







## [PEED-LHD] BUCKET ASSEMBLIES

LOAD | HAUL | DUMP

Pitbull™ Bucket Assemblies are a re-make of the universal LHD buckets supplied by the OEM.

They are upgraded with reinforcements on the normal wear and tear parts.

Hinges and bosses are manufactured with increased carrying capacity.

The bucket assembly includes upgraded hydraulic cylinders, EN 19 pins and protective piping.

**BUILT TOUGH, ENGINEERED TO LAST.**

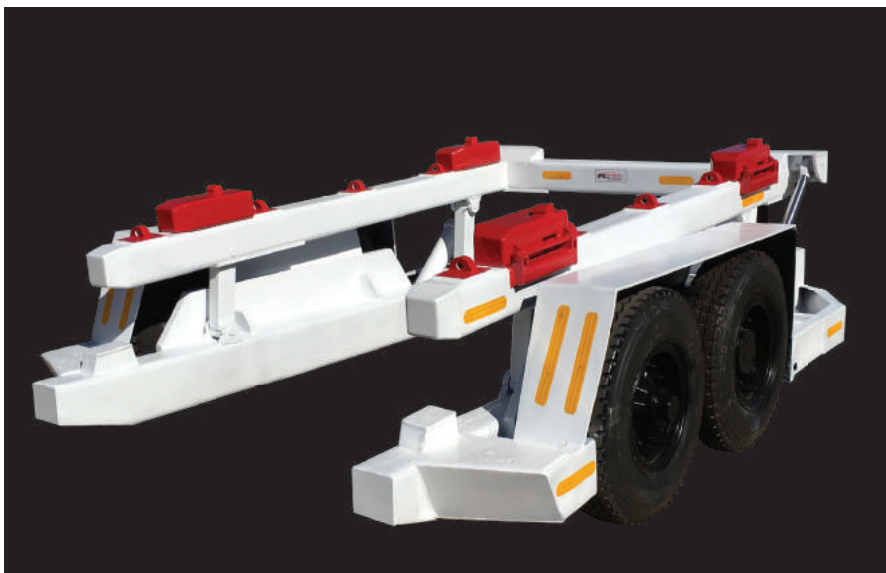
## TECHNICAL DATA : SPECIFICATIONS SHEET

Capacity	2.7m <sup>3</sup>
All pins manufactured	EN19
Bennox reinforced side plates.	✓
Bennox cutting edge.	✓
Additional side brace supports and reinforcements	✓
Robust bosses and heavy-duty hinge arrangement	✓
Piping manifold	✓
Piping supplied with spiral guard	✓
ROQ – Tuf push plate.	✓
Push plate cylinders	X2

**QUALITY | PRECISION | PERFORMANCE**



12 Month Warranty on all structural and hydraulic components.\*



## [PESC] PITBULL™ SCISSOR TRAILER

Waste management scissor trailer.

This unit is tractor-drawn and utilized for refuse removal on mining sites.

The Scissor Trailer is fitted with a tipping mechanism and therefore has a multipurpose application.

One trailer can service multiple bin sites.

**BUILT TOUGH. ENGINEERED TO LAST.**

## TECHNICAL DATA : SPECIFICATIONS SHEET

Tyre Size:	10-50-16.00 (Foam Filled)
Height in folded position:	860 mm
Lifting capacity:	1.5 m³ Bin-load.
Hydraulically operated scissor.	✓
Scissor elevated.	✓
Fitted with fail-safe brakes.	✓
Customized to bin capacity and dimensions.	✓

## QUALITY | PRECISION | PERFORMANCE



12 Month Warranty on all structural and hydraulic components.\*



## [PE-40885] SAFETY LOCKOUT VALVES

### HYDRAULIC AND PNEUMATIC APPLICATIONS

This is a safety matter.

The safety lock out system is a DMR standard / requirement to isolate the unauthorized use of driven machinery and equipment.

The Pitbull™ lock out range is a safe tamper proof system, with double LOCK-OUT protection.

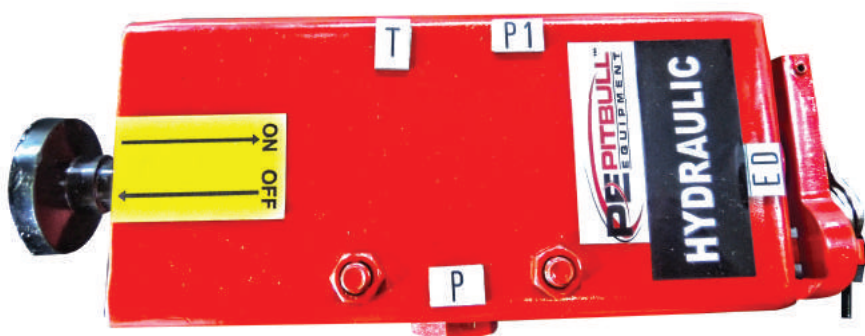
A heavy duty yet simple design allows for easy installation and fitment.

PE Lockout Devices are available in both hydraulic and pneumatic applications.

**BUILT TOUGH. ENGINEERED TO LAST.**

## TECHNICAL DATA : SPECIFICATIONS SHEET

Two-way safety valve:	60 Litres p.m. 300 Bar.
Push pull knob.	✓
Lock and 3 keys.	✓
Mounting plate	✓
Custom housing.	✓
Sealed and tamper proof.	✓



12 Month Warranty on all structural and hydraulic components.\*

## HYDRAULIC LOCK OUT DEVICES

### REQUIREMENTS

- PITBULL™ LOCK OUT DEVICE FITTED TO MACHINE.
- PADLOCK KEY - RESPONSIBLE APPOINTMENT
- LOCKOUT KEY - SUPERVISOR

### LOCK INTO OPERATION - PROCEDURE

- Ensure that the machine is switched off, stationary and parked on a level surface.
- Ensure that the surrounding area has been cleared and it is safe to approach the machine.
- Locate the lock out device and unlock the padlock
- Unclip the latch plate to an open position.
- Insert the lock out-key into the ignition.
- Turn the key clockwise to engage the hydraulic system
- Pull the lever knob towards yourself and feel the spool locate.
- This will ensure that the hydraulic spool has been engaged.
- The hydraulic system on the machine has been activated and the normal start up procedure can now be followed.
- The key will remain in the locked-in position in the lock out valve whilst the machine is operational.

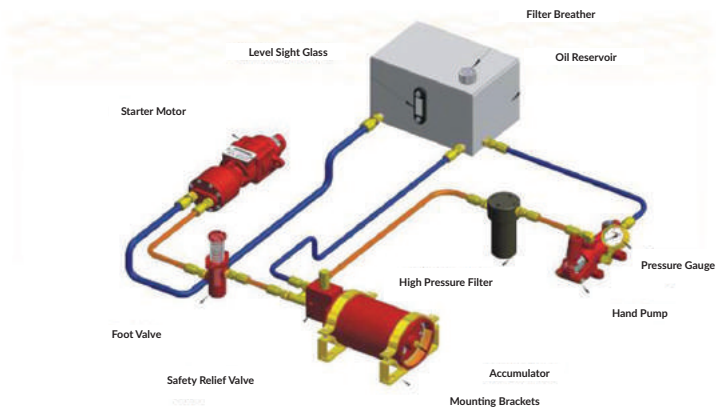
### LOCK OUT OF OPERATION - PROCEDURE

- Ensure that the machine is switched off, stationary and parked on a level surface.
- Ensure that the surrounding area has been cleared and it is safe to approach the machine.
- Locate the locking-out device ignition and turn the key anticlockwise.
- Push the lever knob away from yourself and feel the spool disengage.
- The hydraulic system has now been shut off and the machine cannot start up.
- Remove the key from the ignition.
- Ensure that the latch plate is flipped over and located securely
- Insert the padlock and lock it.
- The machine is now locked out, the hydraulic system is isolated, and the machine is inoperable and SAFE.

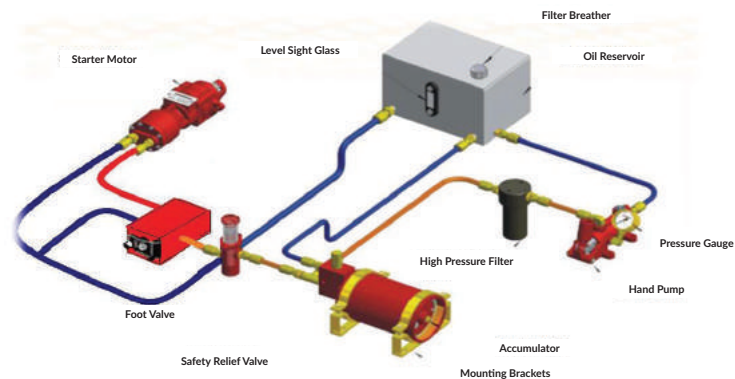




## STANDARD LAYOUT



## INSTALLATION





## **[PEED - GR] GRADER ATTACHMENT**

### **EQUIPMENT: EASY ADD-ON FOR ROAD CLEARANCE & MAINTENANCE**

The Pitbull™ Grader Attachment is a robust and custom-built grader attachment used for above and below ground road maintenance.

Easily hooked up to an underground LHD, it allows for ease of use and boasts an articulated blade function.

**BUILT TOUGH. ENGINEERED TO LAST.**

## TECHNICAL DATA : SPECIFICATIONS SHEET

Dimensions	
Blade Length:	3 000mm
Blade Height:	500 mm
Operating pressure:	115 Bar
Quick release attachment (QRA)	✓
Fitted with multiple angle locks.	✓
Bennox cutting edge	✓
Bennox blade	✓
Reinforced backing plate	✓
Articulated blade	✓
Heavy duty articulation hydraulic-cylinders	✓
Articulation locking device	✓
Mounted onto LHD QDS	✓



12 Month Warranty on all structural and hydraulic components.\*



## **[PEED-CH] PITBULL™ CHOCK**

### **HEAVY DUTY PUSH PLATE**

Continuous relocation of mining equipment is key to progression and site development. This innovative heavy-duty quick hitch attachment is designed as an effective tool to protect LHD buckets and other non-designated equipment performing a non-designated task.  
i.e.: grading and pushing and relocating of equipment.

## THE RIGHT TOOL FOR THE RIGHT JOB

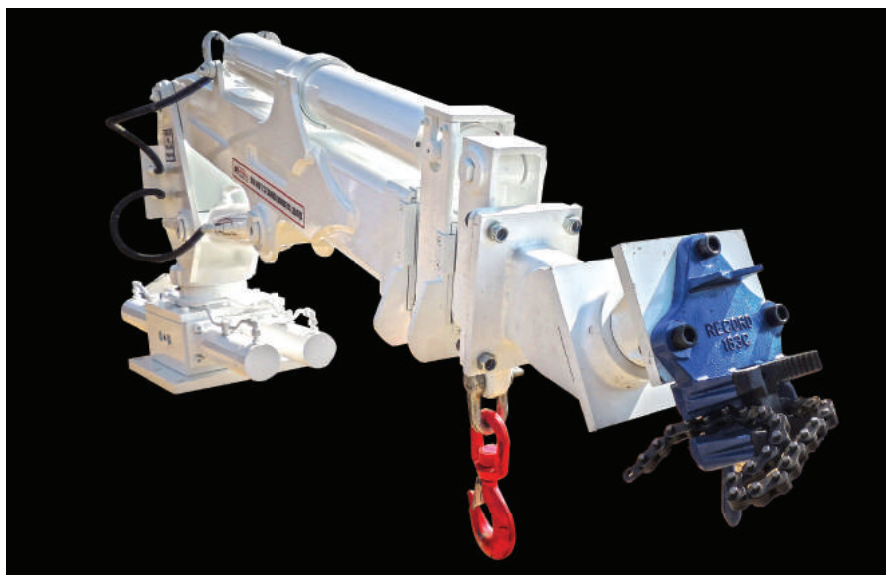
### TECHNICAL DATA : SPECIFICATIONS SHEET

Capacity	2.7m <sup>3</sup>
All pins manufactured	EN19
Bennox reinforced side plates.	✓
Bennox cutting edge.	✓
Additional side brace supports and reinforcements	✓
Robust bosses and heavy-duty hinge arrangement	✓

### LHD ATTACHMENT



12 Month Warranty on all structural and hydraulic components.\*



## [PE300-CR] PITBULL™ PE-300 SERIES

### CABLE-ROLLER

Pitbull™ 300 Series Utility Crane attachment.

This attachment allows for easy assist in underground cable installation.

As the installation progresses the PE-300 Series Utility Crane follows with the booms extended and the roller performs a support guide-and-hold function whilst the cable is secured to the roof.

Allowing for cable handling without the risk of personal injury.

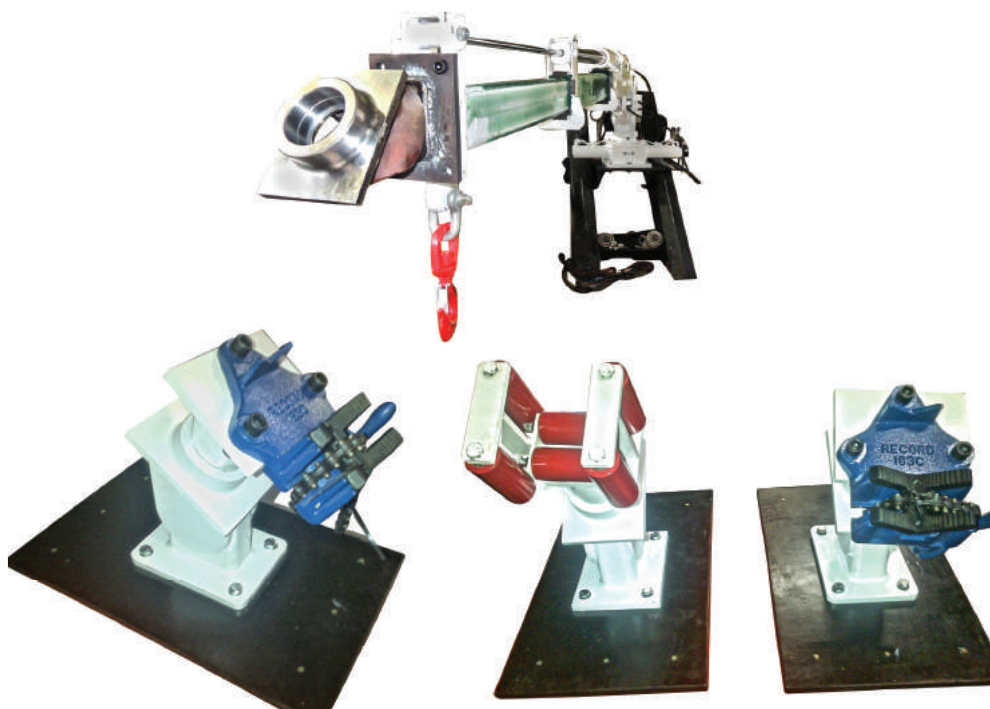
This quick-attach facility with durable construction is ideally employed when there is a need to move or shift equipment short distances.

The Pitbull™ Chock facilitates the creep/progression function in underground mining.



**THE RIGHT TOOL FOR THE RIGHT JOB****TECHNICAL DATA : SPECIFICATIONS SHEET**

Framework	Mild steel plate
Robust steel rollers	EN8
Turntable	Bearing
Rotation:	Continuous
Attachment	Bolt-on

**QUALITY | PRECISION | PERFORMANCE**

12 Month Warranty on all structural and hydraulic components.\*

### *[PEED-HF] PITBULL™ H-FRAMES*

Remanufactured upgrade of existing ED7 H-Frames.  
Carrying arm for any load in the bucket

Manufactured out of EN 3A / EN8/ EN19 Steel and PB2 Bronze  
Certified and stress tested steels - no laminated steel  
Solid construction and improved pin and boss arrangement



### *[PEED-QDS] QUICK-DELIVERY SYSTEM*

Remanufactured and produced with material certification.

Sandvik ED7 / 10 machines



### *[PEED-QRA] QUICK-RELEASE ATTACHMENT*

Constructed from EN3A and fitted with induction  
hardened linkage points

The Pitbull™ Quick Release Attachment is a quick hitch and release  
accessory designed for attachment to the Sandvik ED7 and ED10 loaders.

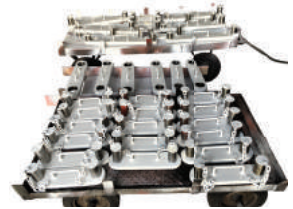
The PEED-QRA is an adaptor manufactured to suite the Sandvik QDS  
to carry a variety of auxiliary equipment, such as cranes,  
forklifts and bucket assemblies.



### *[PEED-TB] TOW BARS*

Haulage tow bars manufactured to sample  
Stress tested steels and CSIR certified

LHD Haulers - WAGNER, SANDVIK  
Haulage tow bars manufactured to sample  
Stress tested steels and CSIR certified.



### *[PEED-TH] TOW HITCH*

SANDVIK ED7 Tow Hitch  
Manufactured to sample and CSIR tested





034 981 3710



36 Stretch Crescent,  
Vryheid 3100



info@pitbullequipment.co.za



pitbullequipment.co.za