



[PE-300 SERIES] PITBULL™ UTILITY CRANE

FITTED TO LOW PROFILE MINING TRACTORS AND TRAILERS.

This unique robust crane was designed to facilitate a mega-lift in constrained areas.
A true multipurpose unit with unlimited application potential, most commonly fitted to general purpose utility vehicles,
underground trailers, load haul dumpers and at the rear of mining tractors.

The PE300 Series Utility Crane is unsurpassed in its weight-to-lift ratio.

At a weight of 645 kg and a lifting capacity of 1 750 kg.

A uniquely powerful design and a proven winner in the mining industry.

BUILT TOUGH. ENGINEERED TO LAST.

TECHNICAL DATA : SPECIFICATIONS SHEET

Unit weight:	645 Kg
Load Lifting capacity:	(Refer to load diagram)
Lifting moment:	3.5 Ton/Meter
Operating pressure:	150 Bar
Maximum reach:	4 610 mm
Hydraulic Telescopic Extension:	2 000 mm – 3 350 mm
Height in folded position:	940 mm
Recommended oil flow:	10-15 Litres p.m.
Overload protection.	✓
Load lock.	✓
Tractor and trailer mounts.	✓

SAFETY FEATURES:

- Hose failure valves on cylinders.
- Main relief valve.
- Port relief valves per function.

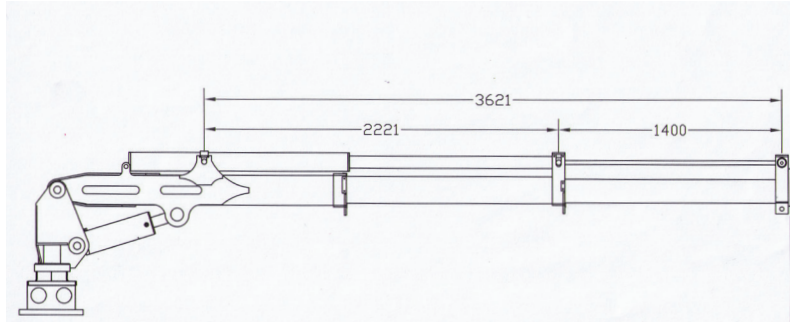
QUALITY | PRECISION | PERFORMANCE



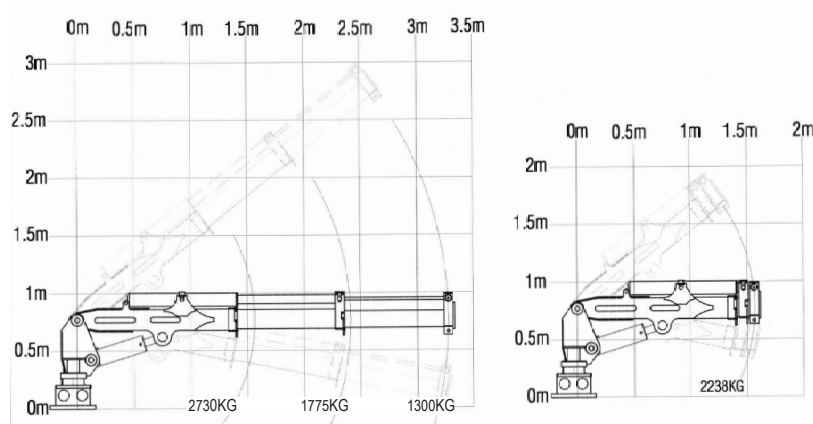
12 Month Warranty on all structural and hydraulic components.*

LOAD DIAGRAMS

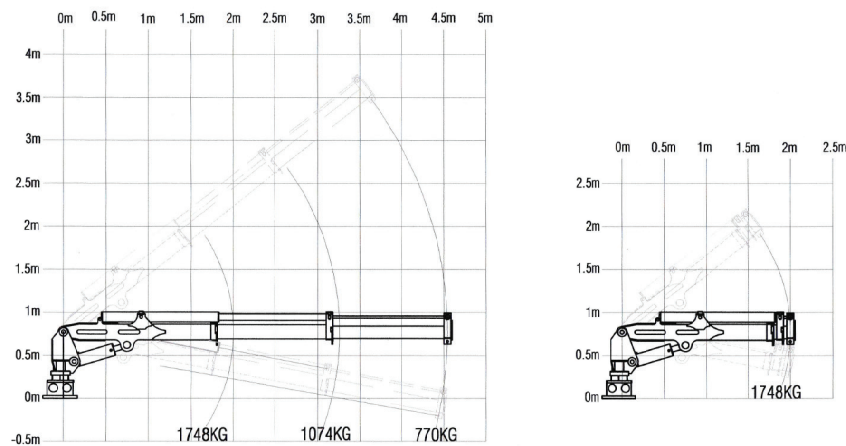
PITBULL 3.5T/M CRANE (BOOM EXTENSION DATA)
DOUBLE HYDR. EXTENSION OPEN



PITBULL 3.5T/M CRANE (TRACTOR - MOUNTED)
LOAD DISPLACEMENT



PITBULL 3.5T/M CRANE (TRAILER - MOUNTED)
LOAD DISPLACEMENT



SAFE, LIGHTWEIGHT AND MANEUVERABLE



PITBULL 300 SERIES MOUNTED TO MANITOU



STRUCTURALLY ROBUST, THE PITBULL™ 300 SERIES UTILITY CRANE IS THE MOST COMPACT & LIGHTWEIGHT CRANE AVAILABLE ON THE MARKET.